

# PV4 LED SOLAR STREET LIGHT



## Areas of application

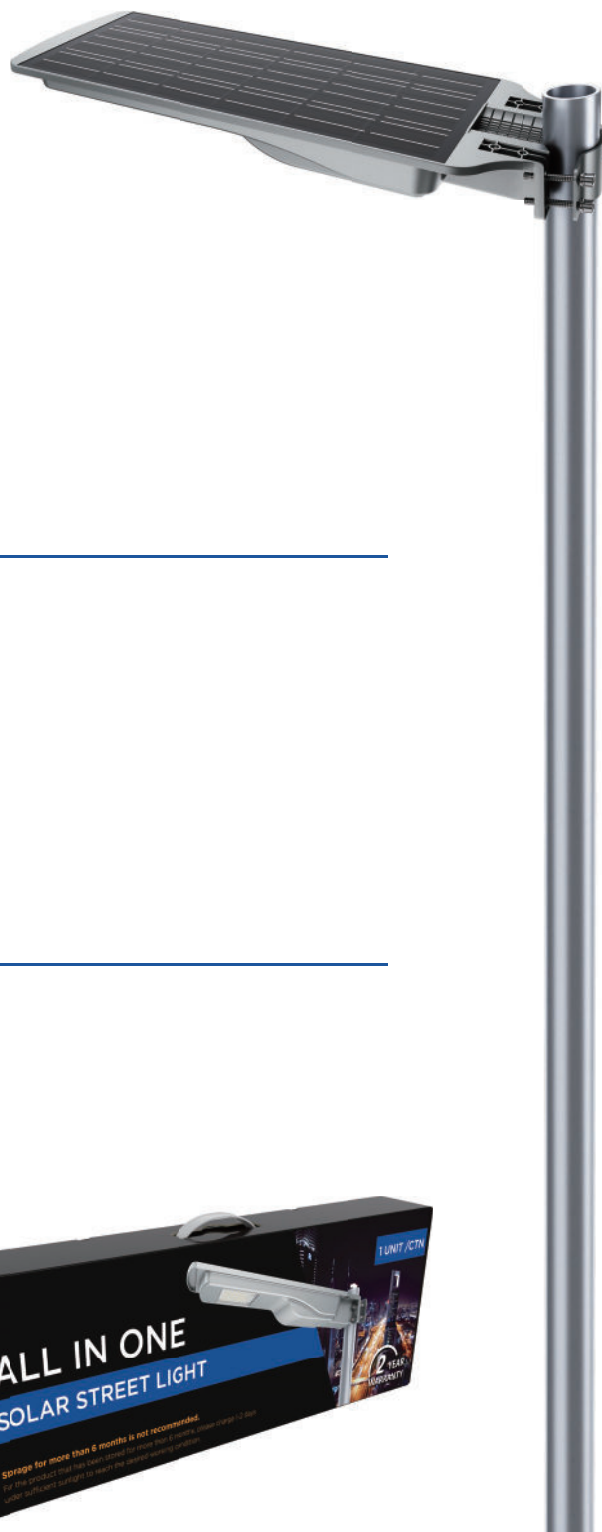
- Village streets
- Urban road
- Courtyard
- Parking Lot

## Description

PV4 is a new private design LED solar street light, with a slim design and higher conversion efficiency mono-crystalline photovoltaic solar panel, 200lm/w efficiency to make the products with better advantages to meet different requirements from customers.

## Key Features

- All-in-one design.
- Multiple installation modes are supported.
- High efficiency MPPT controller, charging efficiency up to 92%.
- Intelligent battery management, prolong the service life of lithium battery.
- Microwave induction control, realize intelligent power saving mode.
- Perfect protection function, undervoltage, overcharge protection.
- Infrared wireless remote control, adjust the working mode easily.



# ZGSM-PV4-10 LED SOLAR STREET LIGHT

## SPECIFICATION

### Lighting

Maxium Lighting Efficiency	200LM /W
LED Chip	Hight bright Bridgelux 3030
CCT	3000-6500K ( can be customized)
Life Span	L70>100, 000 hours
Light out put	2000LM
Working Way	Motion Sensor /Timer

### Solar Panel

PV module	Monocrystalline 12W
Life Span	20 years

### Storage

Battery	LiFePO4 64WH
Autonomy	6-12 hours can maintain low power lighting for 365 days
Life Span	>2500 cycles

### Charging Controller

Charging Mode	MPPT
Life Span	8 years

### Mechanical Specifications

Installation Height	3-6m
Pole diameter	40-60mm
Product Dimension (mm)	577 x188 x65
Weight (Kg)	2.4

### Package Info

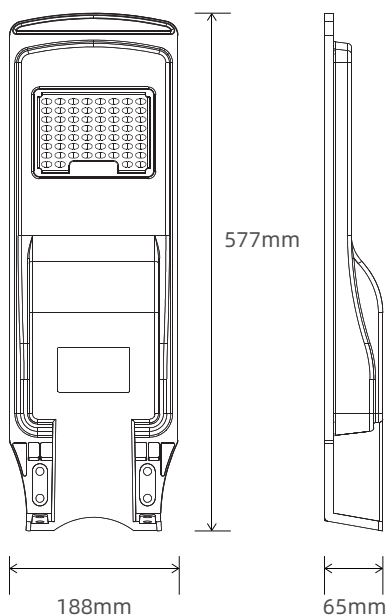
Packing Size (mm)	605 x85 x195 610 x450 x220mm (5units /ctn)
Gross Weight (Kg)	2.7 14.3 (5units /ctn)

### Environment

Working Temperature	-15℃ to +70℃
Water Resistance	IP65



## Dimensions



# ZGSM-PV4-20

## LED SOLAR STREET LIGHT



## SPECIFICATION

### Lighting

Maxium Lighting Efficiency	200LM /W
LED Chip	Hight bright Bridgelux 3030
CCT	3000-6500K ( can be customized)
Life Span	L70>100, 000 hours
Light out put	4000LM
Working Way	Motion Sensor /Timer

### Solar Panel

PV module	Monocrystalline 22W
Life Span	20 years

### Storage

Battery Capacity	LiFePO4 128WH
Autonomy	6-12 hours can maintain low power lighting for 365 days
Life Span	>2500 cycles

### Charging Controller

Charging Mode	MPPT
Life Span	8 years

### Mechanical Specifications

Installation Height	3-6m
Pole diameter	40-60mm
Product Dimension (mm)	695 x241 x65
Weight (Kg)	3.6

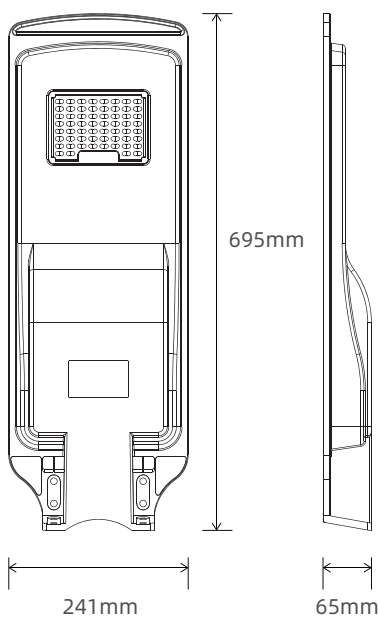
### Package Info

Packing Size (mm)	715 x85 x250 725 x450 x270mm (5units /ctn)
Gross Weight (Kg)	4.0 20.9 (5units /ctn)

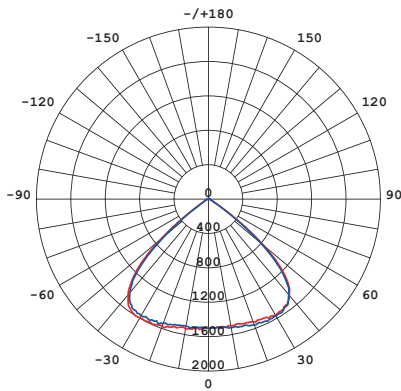
### Environment

Working Temperature	-15 C to +70 C
Water Resistance	IP65

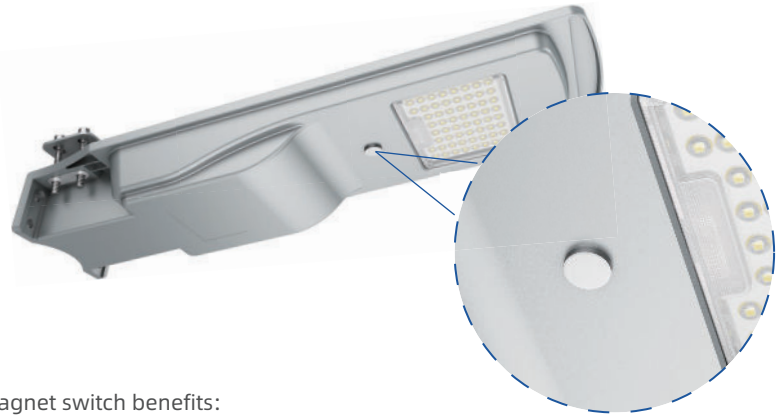
## Dimensions



## Photometry



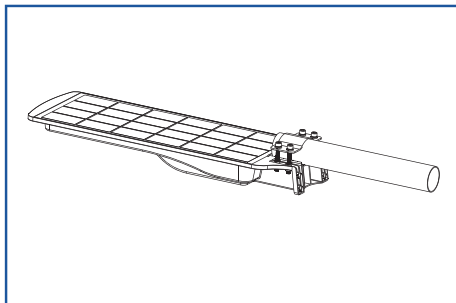
## Magnetic switch



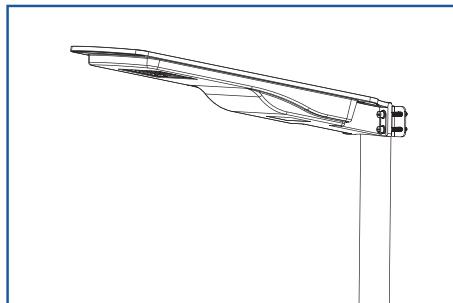
Magnet switch benefits:

- 1: Reduce power consumption when stored for a long time
- 2: Avoid luminaires being activated during the daytime

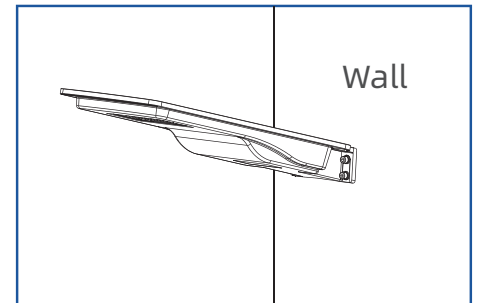
## Mounting Options




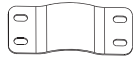



Side Entry



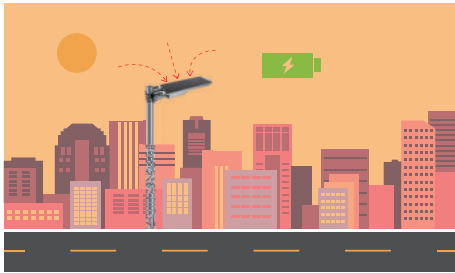
Pole clamp bracket



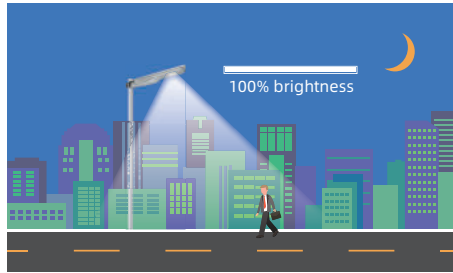
Wall Mount

Item	Parts	Qty	Picture
1	Light Body	1 Sets	
2	Hoop Anchor	1 Set	
3	M8*60MM Screw with nut	4 Sets	
4	Hoop pressing	2 Sets	
5	Remote Control	1 Set	
6	Instruction Manual	1 Set	

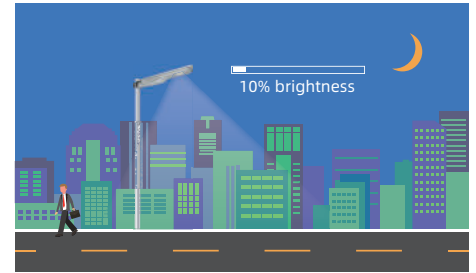
## Factory Default setting:



With Sufficient natural light, the light keeps charging.



The light keeps 100% brightness when presence is detected, The induction delay is about 15S.



The light keeps 10% brightness when there is no presence is detected.



Button	Introduction
OFF	Turn off the lights (Automatically turn on the next night)
AUTO	Turn on and enter the induction mode (100% brightness when presence is detected, 10% brightness when there is no presence is detected, The induction delay is about 15S.)
25%	Force the lights to work for 25%, and turn off the lights the next morning. (Also available during daytime)
50%	Force the lights to work for 50%, and turn off the lights the next morning. (Also available during daytime)
75%	Force the lights to work for 75%, and turn off the lights the next morning. (Also available during daytime)
100%	Force the lights to work for 100%, and turn off the lights the next morning. (Also available during daytime)
M	Timer Mode (Sensor Off, Smart Power, All Night)
2H	100% on when dark,Switch to induction mode after 2 hours of smart power
3H	100% on when dark,Switch to induction mode after 3 hours of smart power
5H	100% on when dark,Switch to induction mode after 5 hours of smart power
8H	100% on when dark,Switch to induction mode after 8 hours of smart power
10H	100% on when dark,Switch to induction mode after 10 hours of smart power

**Note:** 1. The luminaire will automatically enter AUTO mode the following night after any remote control operation by the user.  
2. Smart power is 100% of the load output power, but when the battery capacity is reduced, the smart power is reduced to extend the operating time of the luminaire